

PREMIUM

Hydraulic Press Brake

State-of-the-art CNC Hydraulic press brake

HIGH QUALITY AND PERFORMANCE



HM MACHINERY
Denmark

PREMIUM
CNC-HPB 225-3100



HM MACHINERY

PREMIUM

Hydraulic CNC controlled press brake

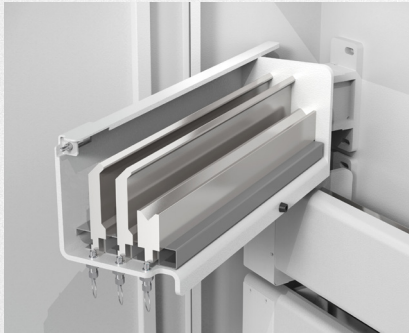
STANDARD FEATURES

Axis:	4 Axis (Y1, Y2, X, R) - Optional 6-axis (Y1, Y2, X, R, Z1, Z2) Y Axis Accuracy $\pm 0.01\text{mm}$ Y Axis Repeat Accuracy $\pm 0.01\text{mm}$ Workpiece straightness $\leq \pm 0.3/1000\text{mm}$ X Axis Accuracy $\pm 0.05\text{mm}$ R Axis Accuracy $\pm 0.1\text{mm}$
CNC Controller:	Cybelec Cybtouch 12 (4-axis) Cybtouch 15 (6-axis)
Top Tools:	Promecam type top tooling
Bottom Tools:	V16, V22, V35, V50 Bottom Tooling (40 TN - 135 TN) Special 4V Die Bottom Tooling from 170 TN
Tool Clamping:	Promecam Type Fast Clamping System (Vertical and horizontal top tool disassembly and assembly system)
Crowning system:	Motorized CNC
Hydraulic pump:	ECKERLE pump with WANNAN Motor
Hydraulic valves:	HAWE/Hoerbiger hydraulic system
Electric components:	Schneider Electric
Servo drives of X- and R-axis:	ESTUN
Backgauge System:	CNC Controlled Motorized Backgauge (X:750 mm) + (R:250 mm)
Backgauge fingers:	Standard 2 pieces / 4 pieces on machines with 6m bending length.
Safety system:	DSP AP + MCS Laser protection system
Linear encoders for pressing beam measurement:	Givi Misure (Italy)
Machine frame:	Heavy and stress relieved welded frame with decoupled C-bracket for linear encoder
Front support arm construction:	Quick-set front support arms w/MINK brushes, horizontal guiding on linear rail & easy height adjustment w/hand wheel
Front support arms:	Standard 2 pieces / 4 pieces on machines with 6m bending length.
Foot switch:	Double pedal foot switch w/anti-panic step & emergency stop button.
Rear side safety:	Rear Door system with safety sensors.
Side Doors	Easy openable side doors secured with safety sensors.
Side door right:	Electrical cabinet
Side door left:	Tool storage divided into three functional areas: 1. The top area is for storing less frequently used lightweight items. 2. The middle area is the rotating tool storage shelves for storing both punches and dies. 3. The bottom area also has tool slots for small tools, commonly used measuring tools, wrenches, and other tools.
Documentation:	CE-Declaration, instruction manual (DK, EN, DE)

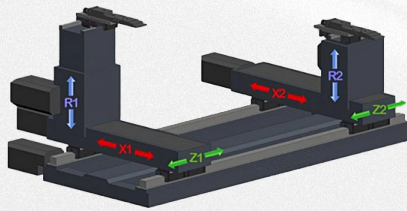
PREMIUM

Hydraulic CNC controlled press brake

GENERAL FEATURES



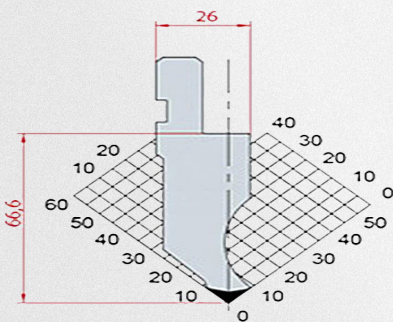
Standard **tool storage**



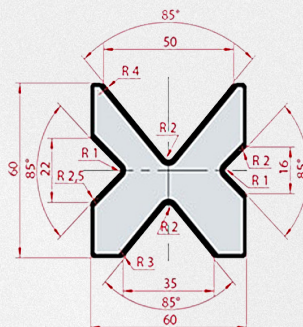
Back gauge system up to **6-axis**



DSP AP + MCS safety system



Promecam
Top tool



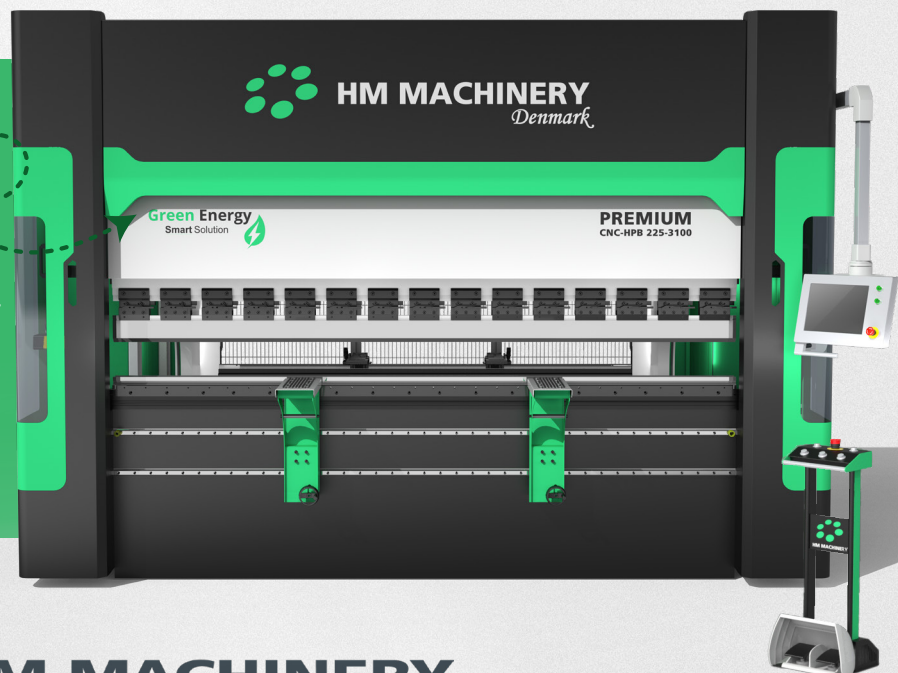
Promecam
Bottom tool



Cybelec Cybtouch 12
(6-axis w/ Cybelec Cybtouch 15)

OPTIONAL:

- Energy saving version
- 6-axis back gauge with servo motor
- Delem DA58T, DA66T or DA69T controller
- Sheet follower BF-01 180 kg/pce
- Sheet follower UP-180 180 kg/pce
- Sheet follower UP-380 380 kg/pce



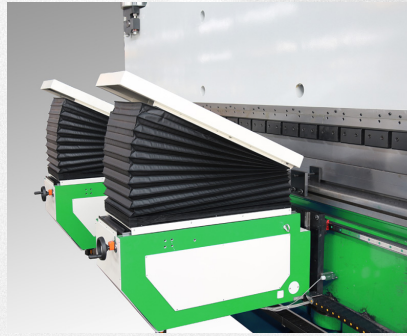
PREMIUM

Hydraulic CNC controlled press brake

OPTIONAL FEATURES



Load: 180KG
UP 180



Load: 380KG
UP 380



Load: 180KG
BF-01

Rear view



PREMIUM

Hydraulic CNC controlled press brake

SPECIFICATIONS & MODELS

Technical Specification/Model		HPB 50 1250/4	HPB 50 1500/4	HPB 80 1500/4	HPB 60 2100/4	HPB 60 2600/4	HPB 100 2100/4	HPB 100 2600/4
Nominal Force KN		500	500	800	600	600	1000	1000
Bending Length mm		1250	1500	1500	2100	2600	2100	2600
Column Distance mm		850	1080	1080	1450	2030	1450	2030
Ram Stroke mm		160	160	160	160	160	200	200
Opening Height mm		410	410	410	410	440	440	440
Oil volume		120	145	145	195	250	195	250
Throat depth		400	400	400	400	400	400	400
Ram Speed	Down Speed mm/s	150	150	150	120	135	120	135
	Pressing mm/s	10	10	10	10	10	10	10
	Return Speed mm/s	160	160	160	150	140	150	140
Electrical	Main Motor Power KW	5,5	5,5	5,5	5,5	7,5	7,5	7,5
	Working voltage	380	380	380	380	380	380	380
	Nominal current fuse	24A	25A	25A	25A	40A	40A	40A
	Total connected load	16A	16A	16A	16A	16A	16A	16A
	Control voltage	220AC	220AC	220AC	220AC	220AC	220AC	220AC
	Frequency	50	50	50	50	50	50	50
	Total connected load	-	-	-	-	10,7	10,7	10,7
	Phase of electricity	3	3	3	3	3	3	3
Backgauge Data Sheet Reference	X Axis travel (mm)	500	500	500	500	500	500	500
	X Axis working speed mm/s	400	400	400	400	400	400	400
	X Axis Accuracy mm	±0.05	±0.05	±0.05	±0.05	±0.05	±0.05	±0.05
	R Axis travel mm	120	120	120	250	250	250	250
	R Axis working speed mm/s	100	100	100	100	100	100	100
	R Axis Accuracy mm	±0.1	±0.1	±0.1	±0.1	±0.0	±0.1	±0.0
	Z Axis travel mm	500	750	750	800	1350	800	1350
	Z Axis working speed mm/s	600	600	600	600	600	600	600
	Z Axis Accuracy mm	±0.1	±0.1	±0.1	±0.1	±0.1	±0.1	±0.1
	Y Axis Accuracy mm	±0.01	±0.01	±0.01	±0.01	±0.01	±0.01	±0.01
	Y Axis Repeat Accuracy mm	±0.01	±0.01	±0.01	±0.01	±0.01	±0.01	±0.01
	Workpiece straightness mm	≤±0.3/1000	≤±0.3/1000	≤±0.3/1000	≤±0.3/1000	≤±0.3/1000	≤±0.3/1000	≤±0.3/1000
	Bending angle accuracy (°)	≤±1	≤±1	≤±1	≤±1	≤±1	≤±1	≤±1
Dimension	Length mm	2220	2470	2470	2970	3570	2970	3570
	Width mm Without front support With front support	1620 1750	1620 1935	1620 1935	1720 2035	1720 2035	1720 2035	1720 2035
	Height mm	2770	2770	2770	2770	2770	2870	2870
	Approx.Weight (KG)	4680	5280	5980	7180	7780	7880	8630



PREMIUM

Hydraulic CNC controlled press brake

SPECIFICATIONS & MODELS

Technical Specification/Model		HPB 100 3100/4	HPB 100 4100/4	HPB 135 2600/4	HPB 135 3100/4	HPB 160 2600/4	HPB 160 3100/4	HPB 160 4100/4
Nominal Force KN		1000	1000	1350	1350	1600	1600	1600
Bending Length mm		3100	4100	2600	3100	2600	3100	4100
Column Distance mm		2450	3420	2030	2450	1950	2450	3420
Ram Stroke mm		200	200	200	200	200	200	200
Opening Height mm		440	440	440	440	440	440	440
Oil volume		340	590	250	340	250	340	590
Throat depth		400	400	400	400	400	400	400
Ram Speed	Down Speed mm/s	150	180	150	150	135	150	180
	Pressing mm/s	10	10	10	10	10	10	10
	Return Speed mm/s	140	140	140	140	130	130	130
Electrical	Main Motor Power KW	7,5	7,5	11	11	11	11	11
	Working voltage	380	380	380	380	380	380	380
	Nominal current fuse	40A	40A	63	63A	63A	63A	63A
	Total connected load	16A	16A	25A	25A	25A	25A	25A
	Control voltage	220AC	220AC	220AC	220AC	220AC	220AC	220AC
	Frequency	50	50	50	50	50	50	50
	Total connected load	10,7	10,7	15,2	15,2	15,2	15,2	15,2
	Phase of electricity	3	3	3	3	3	3	3
Backgauge Data Sheet Reference	X Axis travel (mm)	500	500	500	500	500	500	500
	X Axis working speed mm/s	400	400	400	400	400	400	400
	X Axis Accuracy mm	±0.05	±0.05	±0.05	±0.05	±0.05	±0.05	±0.05
	R Axis travel mm	250	250	250	250	250	250	250
	R Axis working speed mm/s	100	100	100	100	100	100	100
	R Axis Accuracy mm	±0.1	±0.1	±0.1	±0.1	±0.1	±0.1	±0.1
	Z Axis travel mm	1850	2850	1350	1850	1350	1850	2850
	Z Axis working speed mm/s	600	600	600	600	600	600	600
	Z Axis Accuracy mm	±0.1	±0.1	±0.1	±0.1	±0.1	±0.1	±0.1
	Y Axis Accuracy mm	±0.01	±0.01	±0.01	±0.01	±0.01	±0.01	±0.01
	Y Axis Repeat Accuracy mm	±0.01	±0.01	±0.01	±0.01	±0.01	±0.01	±0.01
	Workpiece straightness mm	≤±0.3/1000	≤±0.3/1000	≤±0.3/1000	≤±0.3/1000	≤±0.3/1000	≤±0.3/1000	≤±0.3/1000
	Bending angle accuracy (°)	≤±1	≤±1	≤±1	≤±1	≤±1	≤±1	≤±1
Dimension	Length mm	4070	5070	3570	4070	3570	4070	5070
	Width mm Without front support	1720	1720	1800	1800	1877	1877	1877
	With front support	2035	2035	2115	2115	2060	2060	2060
	Height mm	2870	2870	2970	2910	2970	2970	2970
Approx.Weight (KG)		9245	10480	8830	10680	10830	11710	13.380



PREMIUM

Hydraulic CNC controlled press brake

SPECIFICATIONS & MODELS

Technical Specification/Model		HPB 200 2600/4	HPB 225 3100/4	HPB 225 4100/4	HPB 250 3100/4	HPB 250 4100/4	HPB 300 3100/4	HPB 300 4100/4
Nominal Force KN		2000	2250	2250	2500	2500	3200	3200
Bending Length mm		2600	3100	4100	3100	4100	3100	4100
Column Distance mm		1950	2450	3420	2450	3420	2450	3420
Ram Stroke mm		250	250	250	250	250	250	250
Opening Height mm		440	480	480	480	480	480	480
Oil volume		250	340	590	340	590	340	590
Throat depth		400	400	400	400	400	400	400
Ram Speed	Down Speed mm/s	150	150	180	120	150	110	150
	Pressing mm/s	10	10	10	8	8	8	8
	Return Speed mm/s	140	120	120	110	110	100	100
Electrical	Main Motor Power KW	15	15	15	15	15	22	22
	Working voltage	380	380	380	380	380	380	380
	Nominal current fuse	63A	63A	63A	63A	63A	63A	63A
	Total connected load	32A	32A	32A	32A	32A	46A	46A
	Control voltage	220AC	220AC	220AC	220AC	220AC	220AC	220AC
	Frequency	50	50	50	50	50	50	50
	Total connected load	19,2	19,2	19,2	19,2	19,2	19,2	19,2
	Phase of electricity	3	3	3	3	3	3	3
Backgauge Data Sheet Reference	X Axis travel (mm)	500	500	500	500	500	500	500
	X Axis working speed mm/s	400	400	400	400	400	400	400
	X Axis Accuracy mm	±0.05	±0.05	±0.05	±0.05	±0.05	±0.05	±0.05
	R Axis travel mm	250	250	250	250	250	250	250
	R Axis working speed mm/s	100	100	100	100	100	100	100
	R Axis Accuracy mm	±0.1	±0.1	±0.1	±0.1	±0.1	±0.1	±0.1
	Z Axis travel mm	1350	1850	2850	1850	2850	1850	2850
	Z Axis working speed mm/s	600	600	600	600	600	600	600
	Z Axis Accuracy mm	±0.1	±0.1	±0.1	±0.1	±0.1	±0.1	±0.1
	Y Axis Accuracy mm	±0.01	±0.01	±0.01	±0.01	±0.01	±0.01	±0.01
	Y Axis Repeat Accuracy mm	±0.01	±0.01	±0.01	±0.01	±0.01	±0.01	±0.01
	Workpiece straightness mm	≤±0.3/1000	≤±0.3/1000	≤±0.3/1000	≤±0.3/1000	≤±0.3/1000	≤±0.3/1000	≤±0.3/1000
	Bending angle accuracy (°)	≤±1	≤±1	≤±1	≤±1	≤±1	≤±1	≤±1
Dimension	Length mm	3570	4070	5070	4070	5070	4070	5070
	Width mm Without front support With front support	1927 2210	1977 2260	1977 2260	2077 2360	2077 2360	2177 2460	2177 2460
	Height mm	3020	3070	3070	3070	3070	3170	3170
	Approx.Weight (KG)	13070	14870	16180	15870	17180	17870	19180





HM Machinery | Part of **Scantool Group** | Industrivej 3-9, 9460 Brovst
| Denmark | Tel. +45 98 23 60 88 | info@scantool-group.dk